

# Wooden Cross Newsletter



SEPTEMBER, 2011

WOODEN CROSS LUTHERAN CHURCH, ELCA

*Wooden Cross is a welcoming, Christ-centered community believing in grace and living in service and faith.*

## FLY INTO RALLY SUNDAY!



Rally Sunday is September 11. Fly in to Rally Sunday and join us Saturday, September 10 at Frank Wagner Elementary in Monroe for the flight of the Vaux Swifts.

Have you ever seen thousands of birds fly directly down a single chimney? Vaux's Swifts, summer visitors from Central America, do almost everything on the wing: eat, drink, mate, even sleep. But in late summer, these swifts find respite nightly in hollowed-out tree trunks and chimneys in our region.

Frank Wagner Elementary has one of the two largest swift roosts in Western Washington. Join your Wooden Cross friends on **Saturday, September 10 at 6:30 PM** at Frank Wagner and watch this amazing natural event. The school is located at 639 W Main Street in Monroe.

Bring a picnic or snacks, warm clothes, and lawn chairs to witness this spectacle of synchronicity. We'll have some sunset fun together as we get ready to fly into rally Sunday the next morning. If you have any questions, contact Rena Connell, 360-794-1451.

You may catch a glimpse of this annual event at: <http://www.youtube.com/watch?v=8wkgOKBruTg>

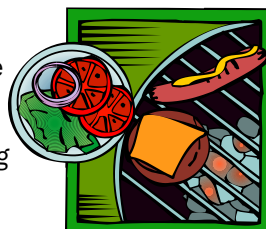
## RALLY SUNDAY AND ANNUAL PICNIC!

**September 11 is Rally Sunday!** This is the Sunday we return to two worship services at 8:00 and 10:30 AM, and we celebrate our **Sunday School Kickoff!** Classes for all ages start at **9:15 AM.**

Our **Annual Church Picnic** will following the 10:30 AM service at Wooden Cross. Come to church dressed to picnic and play. Burgers and hot dogs, root beer floats and coffee will be provided. Bring a salad, side dish or dessert to share. Sign up on the bulletin board. There will be activities and outdoor games. Bring your family and friends!

If you have a grill we could borrow, please email the church office at [w.cross@verizon.net](mailto:w.cross@verizon.net).

*Picnic coordinated by the Life Long Learning and Fellowship Committees.*



<b>From the Bishop</b>	<b>2</b>
<b>Farewell Woody!</b>	<b>3</b>
<b>Sunday School</b>	<b>4</b>
<b>2012 Nominations</b>	<b>5</b>
<b>Fellowship &amp; Outreach</b>	<b>6</b>
<b>ELCA &amp; Creation Care</b>	<b>7</b>
<b>September Calendar</b>	<b>8</b>

**F R O M   T H E   B I S H O P**

*A Message from the Presiding Bishop of the ELCA and a report on the actions of the recent Church Wide Assembly in Orlando:*

Dear Friends,

I came to the 2011 Churchwide Assembly of the Evangelical Lutheran Church in America (ELCA) more grateful for the mission of this church than I have ever been. My sense of hope and my gratitude only increased throughout the week.

During our five days together, we were energized by lively discussion and debate, and nourished as we gathered around bread and wine in worship. I encourage you to read the Summary of Actions to learn about the work we did together on behalf of this church and to share this bulletin insert with the members of your congregation this weekend. For more detailed reports, you'll find daily legislative updates posted at [www.elca.org/assembly](http://www.elca.org/assembly).

Thank you for your continued prayers and support of this church. I thank God for each of you.

In God's grace,  
 Mark S. Hanson  
 Presiding Bishop  
 Evangelical Lutheran Church in America

**2011 Churchwide Assembly: Summary of Actions**

The Twelfth Biennial Churchwide Assembly of the Evangelical Lutheran Church in America (ELCA) was held Aug. 15-19, 2011, at the Orlando World Center Marriott. The theme was "Freed in Christ to Serve."

- ELCA Malaria Campaign officially launched
  - "Genetics, Faith and Responsibility" social statement adopted
  - Review process for social statements adopted
  - Living into the Future Together implementing resolutions adopted
  - 2012-2013 Budget proposals adopted
  - Memorials and constitutional changes adopted
- For more information on the work of the assembly, including daily legislative updates, videos and a news blog, visit [www.elca.org/assembly](http://www.elca.org/assembly).



**M I S S I O N   S U P P O R T**

The ELCA Serving Around the World. Thanks to your [mission support dollars](#) and your designated gifts to the [ELCA World Hunger Appeal](#), [ELCA International Disaster Response](#), and [designated projects](#), the ELCA engages in God's mission in more than 90 countries around the world through companion churches and institutions. Missionaries with the ELCA serve in 48 countries in "accompaniment" assignments that range from a few months to eight years or more. The ELCA Global Mission unit defines accompaniment as *walking together in solidarity that practices interdependence and mutuality*. [Find missionary stories](#) in the *Hand in Hand* Quarterly Newsletter at [www.elca.org/missionarysponsorship](http://www.elca.org/missionarysponsorship).



**WOODEN CROSS LUTHERAN CHURCH**

17401 198th Avenue NE  
 Woodinville, Washington 98077  
 (corner of 198th and Woodinville/Duval Road)

- Church ..... **425-788-3626**
- Fax ..... 425-788-0609
- Email ..... **w.cross@frontier.com**
- Website ..... [www.woodencrosslutheran.org](http://www.woodencrosslutheran.org)
- Sunday Worship (Sep—May): ..... 8:00 & 10:30 AM**
- Education Hour (Sep—May): ..... 9:15 AM**
- Summer Sunday Worship (Jun—Aug): ..... 9:00 & 10:30 AM**
- Pastor.....
- Secretary / Bookkeeper ..... Kathy Corneloup
- Organist..... Seung Lee
- Choir Director..... Dennis Kruse
- Handbell Director ..... Malia Johnson
- Altar Guild..... Sherry Kimball
- Sunday School Coordinator ..... Jody Rutledge
- Sunday School Coordinator ..... Kristen Berendsen

**FAREWELL WOODY!**

The church was packed for Woody's farewell on Sunday, August 28. Thank you to all the people up front and behind the scenes who worked hard to make this special event memorable. It was a great sendoff for our beloved pastor, leader, teacher and friend. He will be greatly missed.



Photos by Chris Parker



- Sherry Kimball ..... President
- Aubrey Berendsen ..... Vice President
- Carolyn Accimus ..... Secretary
- Beth Boylan ..... Treasurer
- Diane Glinn ..... Financial Secretary
- Dave Donnelly ..... Council Member
- Dennis Stefani ..... Council Member
- Sherman Johnson.. Council Member
- Linda Mears ..... Council Member
- Nancy Hansen ..... Council Member
- Mary Mathers ..... Council Member



**Challenge & Opportunity**

◀ **Monthly Words of Wisdom** ▶

*God does not call us to be ascetics, but he does call us to a right sense of proportion in administering our substance.*

<b>2011 Budget Weekly</b>	
Local Offering Goal:	<b>\$5,816</b>
<b>JUN Offerings: \$21,968</b>	
JUN Weekly Average:	<b>\$5,492</b>
<b>JUL</b> Week 1:	\$5,271
Week 2:	\$5,244
Week 3:	\$4,351
Week 4:	\$6,219
Week 5:	\$1,908
<b>Total:</b>	<b>\$22,993</b>
<b>Weekly Average:</b>	<b>\$4,599</b>
<b>AUG</b> Week 1:	\$4,247
Week 2:	\$4,516
Week 3:	\$4,616
Week 4:	\$6,991
<b>Total:</b>	<b>\$20,370</b>
<b>Weekly Average:</b>	<b>\$5,093</b>

**Thank you!**

## SUNDAY SCHOOL TEACHER ORIENTATION

This year the Sunday School year will be divided into three blocks: **Fall** (SEP 11–NOV 20), **Winter** (NOV 27–FEB 19) and **Spring** (FEB 26–JUN 3). Volunteers can now choose to teach a portion of the year, which can be a great help with family calendar planning. Our goal is to have two teachers per block so there will be an automatic sub if needed. We will be using the SPARK lectionary curriculum from Augsburg Fortress.

We still have several openings for teachers. If you can help, please contact me with the grade level(s) and block (s) in which you'd be interested in volunteering.

All Sunday School Teachers are invited the **Teacher Orientation** (and Lifelong Learning Committee Meeting) on **Tuesday, September 6 at 6:30 PM**. At the Orientation you will be given the class curriculum, and we will prepare the classrooms for the new year.

## GOODBYE & THANK YOU

Dear Wooden Cross,

It has been a privilege to work alongside you these past two years of ministry. I will fondly remember the travels, service and music we shared. My prayers are with you during your time of transition and I am hopeful for what God has for you in your next chapter.

Sincerely,

Leslie Gilbertson

## YOUTH KICKOFF!

8<sup>th</sup>-12<sup>th</sup> Grade Youth and their Parents are invited to the **Youth Kickoff & Pizza Dinner Event** on **Wednesday, September 7 at 6:30 PM**. We will start planning the 2011-2012 calendar of activities such as the tent city meals, Annual Auction, the ELCA Youth Gathering in New Orleans in July, and more! Leslie Gilbertson will not be returning this Fall as the Youth Director. So youth and parent involvement is even more important to ensure the activities and events happen.

Please **R.S.V.P.** so we can be sure to order enough **pizza**. If you have any questions, please email **Beth Rolling, Youth Committee Chair**, at [isualums@comcast.net](mailto:isualums@comcast.net)



Sunday School will begin with the traditional Music Opening before the kids go to the classrooms. During the Music Opening on Rally Sunday, we will present the Sunday School pins.



Sue Viebrock will lead the opening on Rally Sunday. Sue will have heart surgery on September 13, and has arranged for Peg Jessen to lead the Music Opening while she is recuperating—at LEAST two months.

New this year, there will be a Nursery Assistant during the Sunday School hour for teachers and/or parents of very young children who would like to attend the Adult Class.

Thanks so much for the teaching commitments of our returning and new teachers.

--Jody Rutledge, Sunday School Co-Coordinator

## PEACE DAY SUNDAY SCHOOL SPEAKERS

Wooden Cross will celebrate Peace Day on September 18. There will be guest speakers during the Sunday School class.

The Karim family emigrated to the U.S. from Pakistan shortly after their marriage in 1999. Saima has a Masters in Applied Psychology, and a Masters in Life Span Human Development. She is the owner/ director of her in-home licensed day care in Mukilteo called Kinder Karavan.



Ata and Saima Karim and their son, Jibrán (7)

Ata Karim has a Doctorate in Clinical Psychology and is currently the Director of the Multicultural Student Program at Bellevue College. He is also the owner of Global Leadership Solutions. Together they parent the "joy of their lives," Jibrán, a student at Picnic Point Elementary in Mukilteo.

During Adult Sunday School on September 18, they will be talking about their decision to come to the U.S. and their faith journey as Muslim Americans.

## 2012 NOMINATIONS

During the months of September, October and November, the **Nomination Committee** will secure the nominees for all open elected leadership positions for members on the Ministry and Mission Committees—Worship and Music, Lifelong Learning, Evangelism, Social Ministry, Fellowship, Youth and Young Adults, and Stewardship—for the year 2012.



Nominees will be found in the willingness of members to commit time and talents to leadership roles, and to active participation in ministries of special interest—around the abilities and talents they have to share.

The Nomination Committee has the responsibility to prepare the list of Council and Committee Member Nominees for election at the **Annual Meeting and Brunch**, on **Sunday, January 22, 20112**

**2012 Nomination Committee Members** are: Walt Binz, Pet Jessen, Doug Pearman, Karla Pearman and Cheri Stefani.

## LUTHERAN MARRIAGE ENCOUNTER

**A WEEKEND OF DISCOVERY...A LIFETIME OF LOVE.** Rediscover the one *you* love on a **Lutheran Marriage Encounter** weekend! Marriage Encounter is 44 hours where married couples can get away from jobs, kids, chores, and phones—and focus only on each other.

If you'd like greater depth, growth, and enrichment in your relationship, you'll like the difference a Marriage Encounter weekend can make! The next Weekend is **October 14-16, 2011** in Seattle. Visit the website [www.GodLovesMarriage.org](http://www.GodLovesMarriage.org) for more information and online registration.

**Registration is needed by September 23.** After that date, please contact Jim & Detra Swenson, [jimanddetra@comcast.net](mailto:jimanddetra@comcast.net), 360-574-6009, for weekend availability.

## W C C H O I R

All are welcome to come and join the Wooden Cross Choir for fun, friendship and fellowship—in addition to making music!

There is always room for more in the choir, and all who like to sing are welcome. Please consider being part of a team that works hard and has fun in order to enhance the worship experience through music. The choir rehearses on **Thursdays, from 7:30–9:00 PM.**

I am looking forward to seeing all of your smiling faces, both old and new. I can be reached at [evolarts@gmail.com](mailto:evolarts@gmail.com) or by phone at 425-788-9646.

—Dennis Kruse, Choir Director

## HOLDEN VILLAGE FALL WORK WEEK

The Wooden Cross Fellowship Committee is looking for a small group of willing hands and willing hearts to volunteer for Fall Work Week October 23-30. Together with other



volunteers we can spend time in the beauty of Holden helping the Village housekeeping and operations staffs get ready for the fall and winter season.

With lots of experience (or none at all) we can bravely labor both indoors and out. This will be a week of conversations and worship, wonderful food, hilarity, and the joy of working side-by-side toward common goals of project completion and seasonal transition.

Volunteerism is a gift. Maybe this is a gift of time that God is asking from you, as well as gift you can give yourself. To learn more about what this week might be like, go to [http://www.holdenvillage.org/images/stories/forms/volunteer\\_info.pdf](http://www.holdenvillage.org/images/stories/forms/volunteer_info.pdf) or see photos from Fall Work Week 2010 on [Flickr!](#)

The cost is only what it takes to travel there and back. If you would be interested in exploring this fellowship opportunity further, **please email the church by July 31** or contact Rena Connell.

**W C B O O K C L U B**  
**BOOK CLUB**

The September book selection is "Songs of the Gorilla Nation" by Dawn Prince-Highes. Read the book and join us on **Tuesday, September 27, 7:00 PM** at Patty Rubstello's home. All are welcome! For more information, contact **Patty** at **425-486-3070**. Looking ahead, October's book selection is: "**Toward a True Kinship of Faiths: How the World's Religions Can Come Together**" by Dalai Lama.

**A D O P T - A - R O A D**

Wooden Cross members have the opportunity to clean up our 2-mile adopted stretch of Woodinville-Duvall Road on **Sunday, September 25**. We will meet in the church parking lot at **3:00 PM**. Come and join us!

**C O M M U N I T Y L U N C H  
 F O R T H E H O M E L E S S**

Wooden Cross members have the opportunity to cook another nice, hot lunch for the homeless people in the Capital Hill area at Central Lutheran Church on **Friday, September 30th**. If you're interested in preparing and serving, please meet at Wooden Cross by **9:00 AM** on Friday morning, September 30th to carpool.

Or, you may pre-bake potatoes, which will be available at church on Sunday, September 25<sup>th</sup>. Please bake them Friday morning, September 30th, put the hot spuds into a clean cooler (no foil, please) and deliver them to the church by **9:00 AM**.

**P E A C E D A Y**

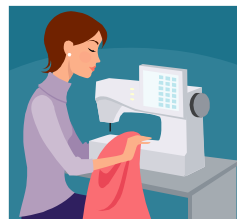
Wooden Cross will celebrate **International Peace Day** on **Sunday, September 18**. The celebration will include a display of **visual art expressions** and a **wall of quotes** related to peace and non-violence.



We will be decorating the church with our peace art and quotes on **Saturday, September 10, 8:00-10:00 AM**. If you'd like to volunteer to make a large dove using chicken wire and old beds sheets, email Rena Connell at [renaj@aol.com](mailto:renaj@aol.com) for plans and directions. Come and help us decorate!

**S T I T C H E R S**

The Wooden Cross **Morning Stitchers** meet on Tuesday mornings at **9:00 AM** beginning **September 20**. **Evening Stitchers** will meet Tuesday, **September 13** at **6:30 PM**. **Stitchers** create quilts for Lutheran World Relief.



Come and learn a creative new hobby! Bring your sewing machine, rotary cutter, or just an interest in participating. There are projects for everyone! Join us for great fellowship. **Newcomers and unskilled sewers welcome!** Questions? Contact: **Pat West, 425-398-0552** or **Bonnie Madsen, 425-788-3110**.

**B L O O D D R I V E**

Donating blood makes a tremendous impact on our community every single day. Recipients are given the particular component they need. The next **community Blood Drive** is set for **Tuesday, September 6, 1:00-7:00 PM** at **Cottage Lake Presbyterian**.

**F R E E B O O K S**

Pastor Woody has finished sorting through his books to select the ones he is taking to Colorado. He is offering the rest to the Church Library. The Library Committee—**Jone and Sonja**—have been sorting these books, choosing which to keep for the church library.

The remaining books are available for the congregation to add to their personal library. Come and check the shelves by the front door and take any one you would like to read and keep.

**F A L L R E C Y C L E E V E N T**

The City of Woodinville is sponsoring a **Fall Recycling Event** on **Saturday, September 10, 9:00 AM—3:00 PM** at the Woodinville Park & Ride.



There will be stations for tires, batteries, oil/filters/antifreeze, refrigerators/freezers/air conditioners, and household goods. For more information, or if you have any questions, call **425-489-2700, ext. 2240**.

## ELCA AND CREATION CARE



*God's Work  
Our Hands*

From the ELCA Social Statement: *"We of the Evangelical Lutheran Church in America are deeply concerned about the environment, locally and globally, as members of this church and as members of society. Even as we join the political, economic, and scientific discussion, we know care for the earth to be a profoundly spiritual matter. As congregations and other expressions of this church, we will model the principle of participation. We will welcome the interaction of differing views and experiences in our discussion of environmental issues such as: personal habits in food consumption; farming practices; and treatment of animals in livestock production, laboratory research, and hunting; land-use planning."*

*In concert with our beliefs as members of the ELCA, the Creation Care Committee offers this interesting article regarding the production and consumption of meat in the United States:*

### **Meat Eaters Guide to Climate and Health**

*By the Environmental Working Group*

We in the United States consume 60% more meat than our Europeans counterparts. Americans' appetite for meat and dairy—billions of pounds a year from billions of animals—takes a toll on our health, the environment, climate and animal welfare. Producing all this meat and dairy requires large amounts of pesticides, chemical fertilizer, fuel, feed and water. From 1971 to 2010,

worldwide production of meat tripled to around 600 billion pounds requiring more water, land, fuel, pesticides and fertilizer and causing significant damage to the planet. It also generates greenhouse gases and large amounts of toxic manure and wastewater that pollute groundwater, rivers, streams and, ultimately, the ocean. In addition, eating large quantities of beef and processed meats increases your exposure to toxins and is linked to higher rates of health problems, including heart disease, cancer and obesity. Eating and wasting less meat (especially red meat) and cheese can simultaneously improve our health and reduce the climate and environmental impact of food.

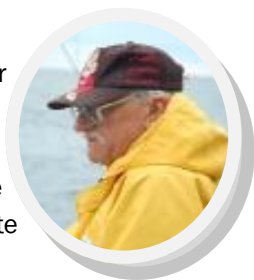
Choosing grass-fed, free-range, pasture-raised and/or organic products also helps the planet and reduces exposure to harmful toxins.

The Environmental Working Group's (EWG) **Meat Eater's Guide to Climate Change and Health** ([http://www.woodencrosslutheran.org/cms/images/stories/Meat\\_Eaters\\_Guide.pdf](http://www.woodencrosslutheran.org/cms/images/stories/Meat_Eaters_Guide.pdf)) can help you green your diet. It provides useful information about the climate, environmental and health impact of your protein choices. We hope it also inspires you to advocate for public policies that will make our food system healthier for our bodies and the planet, since improving our personal food choices is just one part of the solution.

## SYNOD EARTH STEWARDSHIP EVENT

This year's **Synod Stewardship Event** will be **Saturday, September 24**, 9:30 AM to 3:00 PM at St. John United Lutheran Church, 5515 Phinney Ave North, Seattle 98103.

The keynote speaker, Professor H. Paul Johnson, Ph.D., Marine Geology and Geophysics, UW School of Oceanography will speak in the morning about the science of climate change.



In the afternoon there will be very practical workshops on greening your congregation and your

personal life. The workshop presenters are excellent—several are Wooden Cross members!

In addition to information about King County's environmental programs, Snohomish and Skagit Counties are sending representatives to present what they offer to churches and homes.

Participation fee is \$15 per person and includes a catered lunch. Gather your group now for a great event focused on our stewardship of God's creation. Please register by Thursday, September 15.

*Your Synod Stewardship and Mission Support Team*



# September 2011

Sun	Mon	Tue	Wed	Thu	Fri	Sat
				1 7:30p Choir	2	3
4 <b>Nametag Sunday</b> <i>Nancy Winder, Pastor</i> 9:00 Communion Service 10:30 Communion Service  <b>Peace Art / Quotes Submissions Due!</b>	5 <b>Labor Day Holiday Office Closed.</b>  7:00p AA	6 1:00-7:00p <b>Blood Drive at Cottage Lake Presbyterian</b>  6:30p Lifelong Learning Teacher Orientation	7 6:30p <b>Youth Kick-off &amp; Pizza Dinner</b> 7:00p <b>Council Mtg</b> (Adult Classroom) 7:00p Social Minis. 7:15p Green Team	8  7:00p Fellowship Comm. 7:30p Choir	9	10 8:00-10:00a <b>Peace Day Decorating/Set Up</b> 6:30p "Flight of the Vaux's Swifts" <i>Frank Wagner Elementary</i>
11 <b>Rally Day!</b> 8:00 Communion ELW 3 9:15 <b>Sunday School Begins!</b> 10:30 Communion ELW 3 11:30 <b>Annual Church Picnic</b> 7:00 Handbells	12  7:00p AA 7:00p Youth Committee	13  6:30p <b>Evening Stitchers</b>	14  7:00p Evangelism Comm.	15  7:30p Choir	16	17
18 <b>INTERNATIONAL PEACE DAY!</b> 8:00 Communion ELW 3 9:15 Sunday School 10:30 Communion ELW 3 11:30 Worship Committee 11:45 Stewardship Comm. 7:00 Handbells  <b>OCT NEWS Article Due!</b>	19  7:00p AA	20 9:00a <b>Morning Stitchers</b>  7:00p <b>Church Council</b>	21 10:00a Library Committee  5:15p <b>Meet at WC for Tent City Service Project</b>	22  7:30p Choir	23	24 9:30-3:00p <b>"Greening Your Congregation" Event</b> <i>St. John United Lutheran, Seattle</i>
25 <b>PRAISE BAND Foss Home &amp; Village</b> 8:00 Communion ELW 3 9:15 Sunday School 10:30 Communion ELW 3 3:00 <b>ADOPT-A-ROAD CLEANUP</b> 7:00 Handbells	26  7:00p AA	27  7:00p WC Book Club, <i>Rubstello Home</i>	28	29  7:30p Choir	30  9:00a <b>Community Lunch for the Homeless</b>	

